



Bethanga Primary School

PRINCIPAL: Rachel Saunders

Our Purpose We provide all students from Bethanga, Bellbridge and beyond with an inspiring and responsive curriculum to promote thinking and encourage curiosity. We nurture individual talents and needs in our setting underpinned by high expectations, quality opportunities and caring personalized attention in order for our children to reach their full academic and social potential.

School Values **R**APPORT – **R**espect **A**cceptance **P**ersistence **P**ride **O**ptimism **R**esilience **T**ruth

Term 1 Week 3 2023

Newsletter published
Friday 17th February 2023

Upcoming Dates

Week 4

Monday 20th

Playgroup 9:30-11am

Wednesday 22nd

Foundation Rest Day

Friday 24th

Hockey Clinic

Week 5

Friday 3rd March

VSS\$23 Rehearsal 1

Week 6

Monday 6th

Playgroup 9:30-11:00am

Tuesday 7th

Rob Gordon Parent Session

1:00-2:00pm

Week 7

Monday 13th

Labor Day- PUBLIC HOLIDAY

NO SCHOOL

Wednesday 15th

Year 5/6 Camp

Thursday 16th

5/6 Camp

Friday 17th

5/6 Camp

Week 8

Monday 20th- Friday 24th

NAPLAN

Upcoming Staff Changes

Although staff absences are often unavoidable, we will endeavour where possible to communicate any planned changes in the newsletter each week.

Week 4

Tuesday 21st - Mrs Saunders in Millewa

Wednesday 22nd – Miss Sutton in Millewa

Friday 24th – Madonna in Mudgee

From the Principal's Pen:

Another week has flown by! It was lovely to have a relatively uninterrupted week – so much learning was happening! Thank you to our F2023 students and families that came to school this week for allocated 1:1 time with Mrs Smith. This time not only allows Mrs Smith to check in and see how each student is settling in but it also allows for some 1:1 literacy and numeracy assessment to ensure we are aware of every student's point of need and can plan our curriculum accordingly. Students in Grades 1-6 have also been engaged with lots of pre-test assessments over the last couple of weeks. Again, these assessments are tools to inform teaching staff what students know and what needs to be taught allowing us to individualise instruction to be meaningful and engaging. This assessment also provides a baseline for students – as agents of their own learning it allows them to create goals based on misunderstandings and to track their growth as the year progresses.

You are probably hearing the terms 'Student Voice' and 'Student Agency' used a lot and are perhaps wondering what they are?

STUDENT VOICE

Student voice is not simply about giving students the opportunity to communicate ideas and opinions; it is about students having the power to influence change. Authentic student voice provides opportunities for students to collaborate and make decisions with adults around what and how they learn and how their learning is assessed. This is known to lead to improved educational outcomes.

Student Voice is evident when:

- listen to and learn from peers and adults
- ask questions to strengthen their understanding
- share their ideas and opinions
- actively seek feedback from teachers and peers to progress their learning and reflect on their learning experience
- give feedback to peers and teachers
- negotiate learning goals and assessment
- respectfully challenge others' views around learning and teaching
- feel confident to contribute in meaningful ways for a shared sense of ownership

STUDENT AGENCY

Student agency refers to the level of autonomy and power that a student experiences in the learning environment. Student voice and agency are intrinsically linked. Agency gives students the power to direct and take responsibility for their learning, creating independent and self-regulating learners.

Student Agency is evident when:

- work with teachers in making decisions about teaching and learning
- take responsibility for their learning and are, on the whole, independent and self-regulating learners
- negotiate and design learning that stretches their thinking
- can track and measure their own learning growth
- are involved in designing and implementing school policy and programs, and actively contribute ideas about student-led learning
- display the capabilities, confidence and willingness to contribute ideas and make decisions about what and how they learn
- reflect, take action and accept the responsibility that comes with being part of the problem solving.

One of our Annual Implementation Plan goals for 2023 is 'Maximise student learning growth and engagement' achieving this goal will be evident through several data targets, one of which is to increase the positive response scores on the Attitudes to School Survey for 'Student Voice and Agency' from 75% to 80% by the end of this year. To do this, we are increasing the explicit teaching of what voice and agency is to our students so they have a better understanding. In addition, we are creating meaningful, authentic opportunities to increase Student Voice and Agency through leadership opportunities, student forums, goal setting and data tracking, opportunities for student feedback and contribution of student ideas both at a school and cluster level. Our students have a strong connection to our school and a deep sense of belonging so we believe that our focus on increasing understanding of voice and agency in conjunction with authentic opportunities being embedded into our practice will ensure this target is met.

If you are interested in reading our Annual Implementation Plan, it will be available for parents to access after our School Council Meeting next week – please contact me to arrange.

**Kind Regards,
Rach Saunders**



5 Beardmore Street Bethanga VIC 3691



(02) 60 264 263



(02) 60 264 386



bethanga.ps@education.vic.gov.au



www.bethanga.vic.gov.au

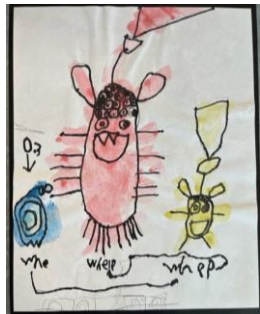


Also find us on Facebook to keep up to date.

Millewa

MARVELLOUS MILLEWA GET CREATIVE!

Each week we learn a new poem in class. In week 1 this was our first poem of the year called "Triantiwontigongolope". At the end of the week, we put our thoughts together to create our very own imaginary insect. They are on display in our classroom please pop on in and have a look! They look spectacular! We would love to add to our poem collection. If you have a poem that you think we might enjoy please send it in to our classroom.



The Triantiwontigongolope

There's a very funny insect that you do not often spy,
And it isn't quite a spider, and it isn't quite a fly;
It is something like a beetle, and a little like a bee,
But nothing like a woolly grub that climbs upon a tree.
Its name is quite a hard one, but you'll learn it soon, I hope.

So try:
Tri-
Tri-anti-wonti-
Triantiwontigongolope.

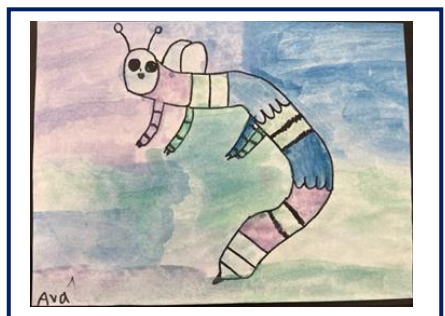
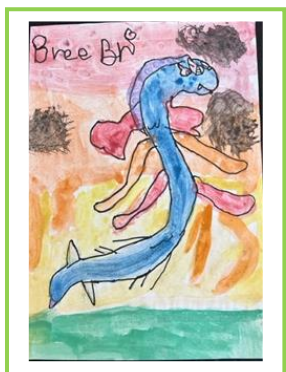
It lives on weeds and wattle-gum, and has a funny face;
Its appetite is hearty, and its manners a disgrace.
When first you come upon it, it will give you quite a scare,
But when you look for it again, you find it isn't there.
And unless you call it softly it will stay away and mope.

So try:
Tri-
Tri-anti-wonti-
Triantiwontigongolope.

But of course you haven't seen it; and I truthfully confess
That I haven't seen it either, and I don't know its address.
For there isn't such an insect, though there really might have been
If the trees and grass were purple, and the sky was bottle green.
It's just a little joke of mine, which you'll forgive, I hope.

Oh, try!
Tri-
Tri-anti-wonti-
Triantiwontigongolope.

C.J. Dennis
(abridged)



RECOVERY AND RESILIENCE TEAM

DR. ROB GORDON ROADSHOWS 2023

Bethanga Primary School
Staff and community session
 Tuesday, March 7th. 1.00pm - 2.00pm

Connect with Rob who has extensive experience in trauma and disaster recovery to discuss the impacts of COVID-19 and bushfires on staff, children and families. These sessions are designed to support your staff, students and parents to increase their understanding of:

- prolonged stress, disruption and uncertainty on health and wellbeing
- self-care strategies to support yourself and others during this time
- the impact on children and practical ways to support them
- post-traumatic growth, hope and optimism

Each session is tailored to suit your school's context and needs.

For any inquiries or specific questions, please contact:

Kate Dale
 Recovery and Resilience Senior Project Officer
 kate.dale@education.vic.gov.au



About Dr. Rob Gordon OAM, PHD, FAPS, FCCLP

Rob Gordon, Ph D. is a Clinical Psychologist and has been Psychological Consultant to the Emergency Management Branch of the Victorian Department of Health and Human Services (DHHS), Emergency Management Victoria and Australian Red Cross for Emergency operations. He has worked with communities and individuals affected by emergencies, trauma, critical incidents and work-related stress throughout Australia and New Zealand for 35 years and provides training and workshops to government and non-government agencies. He has published articles and book chapters on recovery from trauma and emergency. He conducts a psychotherapy practice in Box Hill and is engaged by the Recovery and Resilience Team to provide support to education communities.

Local Babysitting Service

ARE YOU LOOKING FOR A BABYSITTER?

HAZEL'S BABYSITTING SCHOOL AGED KIDS ONLY

I AM A LOCAL YEAR 8 STUDENT. I AM AVAILABLE DURING SCHOOL HOLIDAYS FOR BABYSITTING!

PREVIOUS BABYSITTING EXPERIENCE, REFERENCES AVAILABLE

0493105004 HAZELCOPPER@gmail.com CONTACT FOR AVAILABILITY AND BOOKING

I KNOW BASIC FIRST AID

\$10 PER HOUR

*SCAN FOR EMAIL

Homework Club

Each Wednesday, after school from 3:30-4:30pm starting in week 4 (22nd Feb) we will run a Homework Club in the Art room. This is an opportunity for students in Millewa to bring along their homework to gain assistance with any tasks they are finding difficult.

Parents will need to book their child in each week to confirm staffing required by contacting Jaymee via email,

jaymee.twyman@education.vic.gov.au

Also, to confirm end of session arrangements (either permission to walk home, or pick up arrangements) Student may attend each week, or occasionally.



5 Beardmore Street Bethanga VIC 3691 (02) 60 264 263 (02) 60 264 386

bethanga.ps@education.vic.gov.au www.bethanga.vic.gov.au

Also find us on Facebook to keep up to date.



Student Achievement

Congratulations to the students who were acknowledged at assembly this week for being active learners and making positive contributions to the Bethanga Primary School community.

Billy: for enthusiasm in writing last week and sharing your wonderful ideas with the class. Keep up the great work Billy!

Brianna: for the amazing effort you put into Maths last week. You were able to show an excellent understanding of place value by making two-digit numbers. We were blown away when you made the number 32 using three bundles of ten and two ones, well done!

Annie: for such a fantastic effort at our swimming carnival and for supporting your peers all day. You are very kind, Annie!

Movie night – Regent Cinema Albury

SAVE THE DATE

THE VICTORIAN STATE SCHOOLS
SPECTACULAR

Friday 12th May

This movie night and a corresponding Mother's Day raffle (the Movie Night is booked for the Friday night before Mother's Day) will raise funds to support our students participating in the Victorian State School Spectacular (VSS23) this year.

Further information will come out closer to the date regarding the Movie (sure to be a rom/com at that time of year!) and raffle details. POP IT ON YOUR CALENDAR NOW! Our goal will be to have a private screening (minimum of 70 tickets sold) with 100 people in attendance. Our fundraising goal is \$1,500!




Schedule notice of election and Call for nominations

An election is to be conducted for members of the school council of Bethanga Primary School. This election will take place in conjunction with the AGM on Monday 27th March 2023. A Nomination form has been included with this newsletter (or can be obtained at the school) and must be lodged by 4.00 pm on 10th March 2023.

Following the closing of nominations, a list of the nominations received will be posted at the school. The terms of office, membership categories and number of positions in each membership category open for election are as follows:

Membership Category	Term of Office	Number of positions
Parent Member	From the day after the date of the declaration of the poll in 2023 to and inclusive of the date of the declaration of the poll in 2024	4

If the number of nominations is less than the number of vacancies, a notice to that effect and calling for further nominations will be posted in a prominent position at the school.

 5 Beardmore Street Bethanga VIC 3691  (02) 60 264 263  (02) 60 264 386

 bethanga.ps@education.vic.gov.au  www.bethanga.vic.gov.au

 Also find us on Facebook to keep up to date.

GET TO KNOW OUR COMMUNITY



Jaymee



What makes me a good friend?



Cookies and Cream

My favourite Ice cream flavour

My favourite game



Taboo

You are a really good helper around the school. Olivia T

Thank you for being kind to me. Lucy

I like how I helped you on the first day back. Olivia B

I love you so much. Ivy

I like you! Thank you for all your hard work. Nick

I like how you walk past me and you always give me a smile. Jude

You're really nice. Everly

You are a very good helper. Parker

Thank you for always being kind to me. Evie

You are one of the strongest people I know. I don't think I could get through the day without you. I love how we laugh every day and you come up with awesome ideas! You're just too awesome to put into words.

Georgie

I like you so much. Oliver

You work so hard. Maggie

I like how you help Annie. You are a bright star that lights up the room. Sylvie

I think that you help us a lot. Thank you! Remi

I like you so much. You are so kind and you are a good helper. Brianna

I love you and you have a very nice blue dress. Olivia

Thank you for helping me with everything and you are so helpful. Aleysha

I love you so much. You're the best teacher's aide. You're so nice. Ava.

You are a great helper and very kind. Rueben

You're so nice to everyone around you. You're always willing to help out. Olive

You are so kind to me and others. Quinn

You are a wonderful helper. Your smile lights up the room. Chase

You are a great teacher's aide, and you are also a good friend. Melody.

You are a kind person. Billy Blackburne

You are very kind and helpful. We are happy to have you here. Archie

You are a great helper in Millewa. Angus

You are so kind and helpful. You help me a lot. Amelia

You are always there for me. You always do your best and help me do my best in everything! Happy Bucket Filler Day. Annie

I like how you help me with my work. Hudson

You are very nice and welcoming to new people. Jacob

Love how you always help me and I think you're very funny. Billy Bayliss

You are amazing. Bree

Thank you for helping me with my work when I need it. Denver

I think I'm very lucky to have you in our classroom forever! You do everything with a smile and always seem to whip up all tasks like you have magical powers. Thanks for all your wonderful help each day. Miss Sutton

You help with a lot of things. Thank you. Brooke

I love you. You're the best you. Hugo

You are a fabulous helper. I don't know how we would do stuff without you! Ivy

What a beautiful soul you are! You are so helpful and kind and I appreciate all that you do. Mrs Hamam

I can't imagine our school without you in it! You are a power house- you do so much to support me and all of the students- thank you. Mrs Saunders



5 Beardmore Street Bethanga VIC 3691



(02) 60 264 263



(02) 60 264 386



bethanga.ps@education.vic.gov.au



www.bethanga.vic.gov.au



Also find us on Facebook to keep up to date.